

# Ratonga Taiohi Pānui

what you need to know



Comcol Canterbury celebrating the spooky season

# leaving school before the age of 16

15 year olds may be able to be in the NEET service if they have an early leaving exemption

We know that outcomes are better for taiohi who get NCEA level one, and even better for those who get level two.

However, remaining in school isn't the best option for every taiohi. A 15 year old may be eligible for the NEET service if:

- they have an Early Leaving Exemption from the Ministry of Education
- the school year has finished, the young person will turn 16 before the next school year starts, and they have no intention of returning to school when they are 16.

For more information about the *Early Leaving Exemption* and what you should do if you are working with a 15 year old who is interested in this option visit [leaving school before the age of 16 | Youth Service providers](#)



youth service  
ratonga taiohi



MINISTRY OF SOCIAL  
DEVELOPMENT  
TE MANATŪ WHAKAHIATO ORA

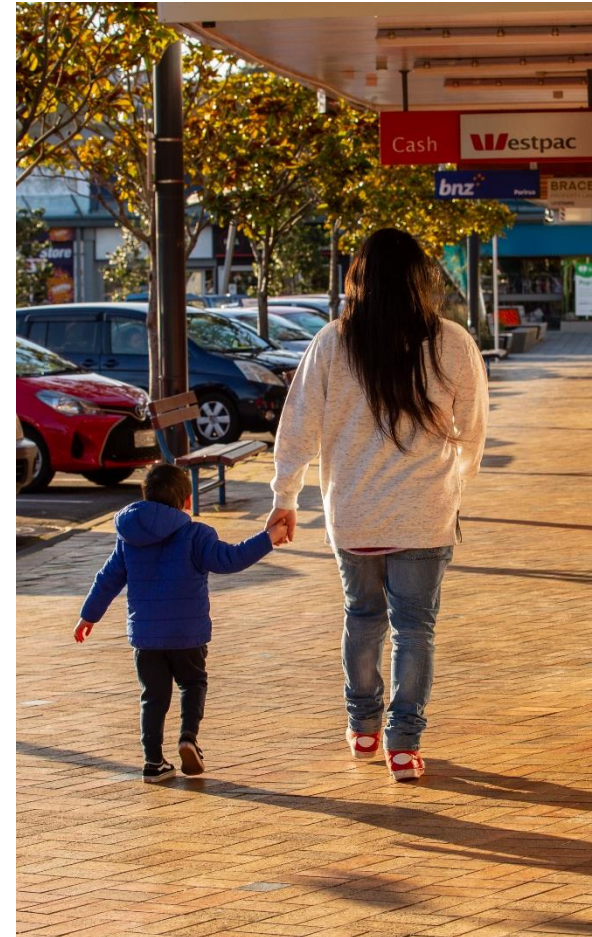
# emergency housing supplier standards are here

## part one: the emergency housing supplier standards

This is a reminder that since Monday, 6 November 2023, MSD will only use opted-in emergency housing suppliers. MSD has put in place [supplier standards for emergency housing](#) to make sure the motels and other accommodation providers we work with are getting the basics right. The standards were published in August, and now MSD is working with suppliers to help them opt-in to the standards.

When you are looking at emergency housing for a young person, they will continue to contact MSD's Manager Regional Housing who will provide support and a list of opted-in suppliers. For more information about the Youth Service Emergency Housing end-to-end process, visit:

- [Youth Service Emergency Housing end-to-end process](#)
- [Youth Service Emergency Housing end-to-end guidance](#)



youth service  
ratonga taiohi



MINISTRY OF SOCIAL  
DEVELOPMENT  
TE MANATŪ WHAKAHIATO ORA

# emergency housing supplier standards are here

## part two: situations where you can use a supplier who hasn't signed up to the standards

This new policy will mean an Emergency Housing Special Needs Grant can only be paid to a supplier that has opted-in to the emergency housing supplier standards, **unless one of the following exceptions apply.**

### You can grant to a not opted-in supplier if:

- there are **no suppliers** who have opted-in to the emergency housing supplier standards available that are adequate for the needs for the young persons and their immediate family
- a supplier who has not opted-in to the emergency housing supplier standards is the most **appropriate** option
- there are **exceptional circumstances** that cannot be planned for that are beyond the young person's control.



youth service  
ratonga taiohi



MINISTRY OF SOCIAL  
DEVELOPMENT  
TE MANATŪ WHAKAHIATO ORA

# recording drivers licence programme progress in ART

you need to record the commitment form, the costs and the achieved licence in ART

## recording the commitment form

When taiohi sign up for the programme, you will need upload their signed [Drivers Programme Youth Commitment form](#) to ART. **Make sure you use the 'Driver Commitment Form' file category.**

Learn more in [section two of the drivers licence eLearning module](#).

## recording when taiohi achieve their licence

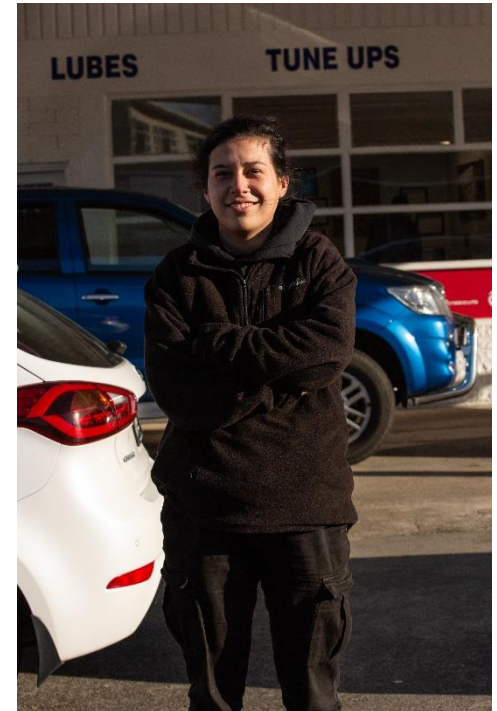
Once a young person achieves there licence, it is important that you record the date the young person sat the test as the issue date in ART.

Check out [section two in the drivers licence module](#) to learn more.

## recording the costs

Initially, your organisation needs to cover the cost of lessons, tests, and birth certificates for taiohi who are in the drivers licence programme. To make sure you get reimbursed, you will need to record the cost in ART.

For more information about recording license costs, have a look at [section five of the drivers licence eLearning module](#).



# tips and tricks from the youth service support unit

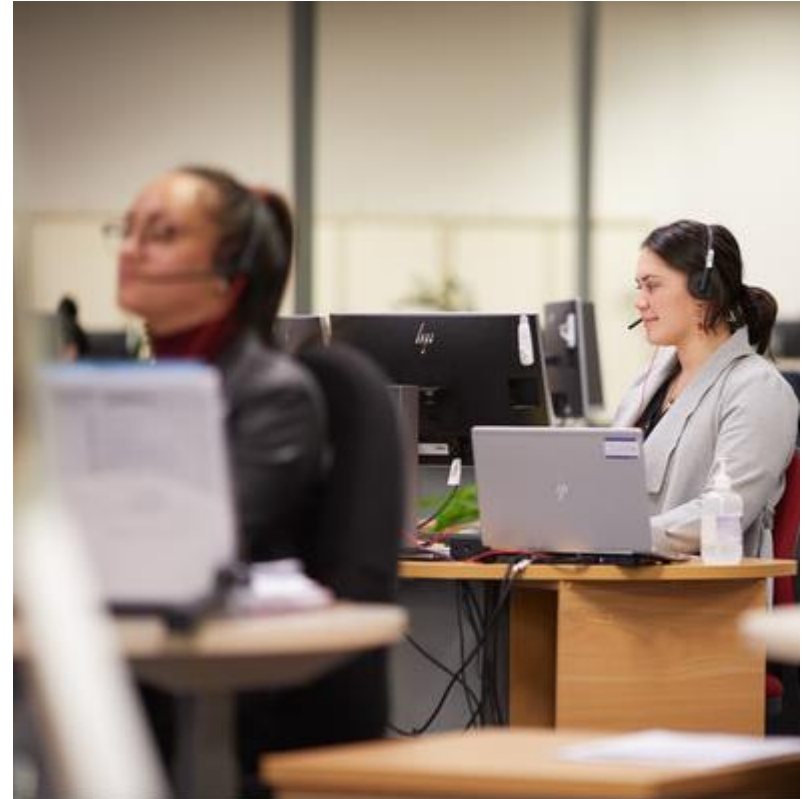
every week the youth service support unit will be sharing some advice

## Correct inbox for escalations

Escalations are for applications that have a good reason to be prioritised (for example, a young person has to leave their accommodation immediately and the redirections to the old landlord need to be stopped).

If you need to escalate an application send it to [youth\\_escalations@msd.govt.nz](mailto:youth_escalations@msd.govt.nz).

If you send it to a different inbox it may not get picked up and treated with the urgency it needs.



**youth service**  
ratonga taiohi



**MINISTRY OF SOCIAL  
DEVELOPMENT**  
TE MANATŪ WHAKAHIATO ORA

# upcoming drop-in sessions

our drop-ins focus on the technical aspects that are unique to our service

## housing

Tuesday 14 November, 10am



In this drop-in session we will cover some of the support and processes MSD has to help taiohi with housing. We will cover:

- the emergency housing end-to-end process
- the emergency housing supplier standards
- the available products and services
- the new housing eLearning modules.

Join via [Teams](#)

## transferring to work and income

Tuesday 21 November, 10am



If the young person doesn't have an exit destination when they age out of Youth Service, they can transfer to a working age benefit.

In this session, we will cover what that process looks like and answer any questions you have.

Join via [Teams](#)

You can find the full drop-in session schedule  
on our provider site here:

[drop-in sessions | Youth Service providers](#)

or print the [breakroom poster](#)



youth service  
ratonga taiohi



MINISTRY OF SOCIAL  
DEVELOPMENT  
TE MANATŪ WHAKAHIATO ORA

# realising the dreams and aspirations of youth

tau awhitia te taiohi, ka puta ki te wheiao

w: [providers.youthservice.govt.nz](http://providers.youthservice.govt.nz)

e: [national\\_youthservice@msd.govt.nz](mailto:national_youthservice@msd.govt.nz)