

ratonga taiohi pānui

what you need to know

end of year celebration



join the teams across the motu who help deliver
Youth Service in celebrating 2023

Teams
20 December
12–1pm

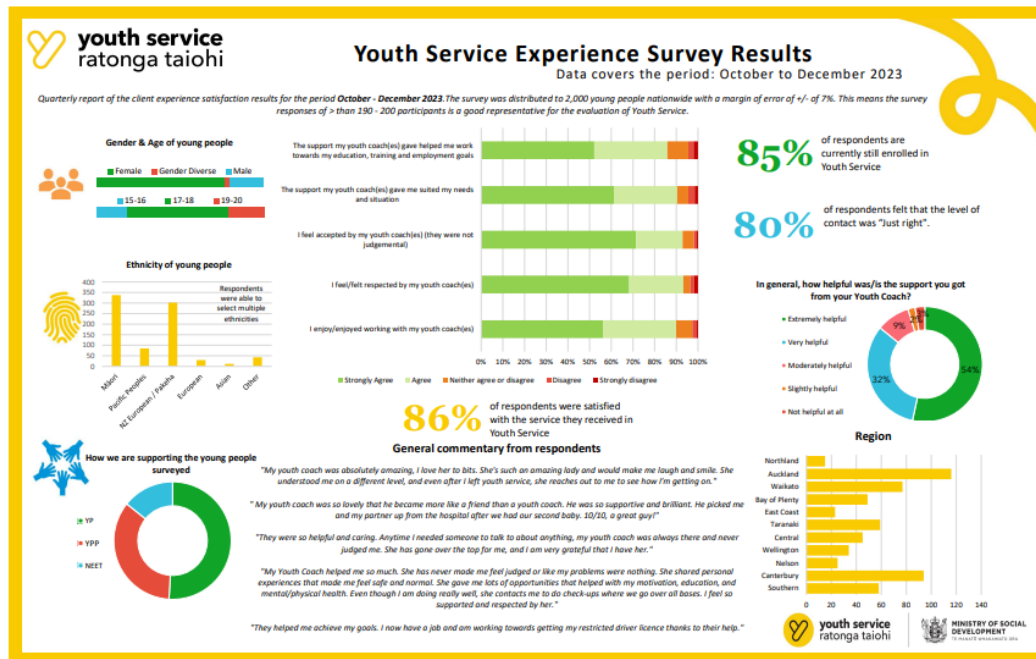


youth service experience survey response results

the results are in – nationally, we have made improvements across the board 🎉

Over the past few weeks we've heard from taiohi across the motu about their experience with Youth Service.

RCMs have your providers results and will share them with you soon. You can also send us an email to national_youthservice@msd.govt.nz and we can send them directly to you. Check out the national results below.



end of year celebration – come and celebrate 2023 with us

join us to connect with each other and celebrate the year that has been 2023

Come along to our online session on **Wednesday 20 December, 12–1pm** to join the teams across the motu who help deliver Youth Service in celebrating 2023.

In this session, there will be time to connect with each other and we will hear reflections from people from different areas of our service.

The meeting will be held on teams. Put a reminder in your calendar with the teams link: [Click here to join the meeting.](#)

Send us your pictures and videos
There's no **Youth Service** without **you!!**

Please send us pictures and videos from this year to national_youthservice@msd.govt.nz



youth service
ratonga taiohi



**MINISTRY OF SOCIAL
DEVELOPMENT**
TE MANATŪ WHAKAHIATO ORA

recap: summer prep drop-in session

here are some things to know about how things work over the Christmas period

Payments over the holiday

If a young person's payment day falls on a public holiday, they will be paid early. The processing cut off date for any changes that will affect payment (eg income, change of bank account, change of address) is the Tuesday before the holidays. See the table for more details.

Emergency housing

To ensure stability over the Christmas period, emergency housing can be granted for up to 21 days (instead of seven days). You still will need to have regular contact with the young person during this period (contact every 30 days and face-to-face contact every 90).

Obligation and sanctions

Sanctions cannot be imposed between 25 December – 15 January. You still will need to have regular contact with the young person during this period.

Application lapse dates

Applications still need to be completed within 20 working days. If you need an extension get in touch with YSSU.

Christmas week	
Expected payment date	Revised payment date
Tues – 26/12/23	Fri – 22/12/23
Wed – 27/12/23	Sat – 23/12/23
Thur – 28/12/23	Thur – No change
Get your tasks in before end of day Tuesday – 19/12 to take affect for the following week payment	
New Year's week	
Expected payment date	Revised payment date
Tues – 04/01/23	Fri – 29/12/23
Wed – 05/01/23	Sat – 30/12/23
Thur – 06/01/23	Thur – No change
Get your tasks in before end of day Tuesday – 26/12 to take affect for the following week payment 26/12	

upcoming drop-in sessions

our drop-ins focus on the technical aspects that are unique to our service

induction session for new youth coaches

Wednesday 6 December, 10am



In this drop-in session we're cover:

- the legislation and policy that determines how Youth Service operates
- the people and teams that help deliver Youth Service
- where to find information to help you in your role.

You'll also get to meet some other new youth coaches and be able to ask us any question you have about Youth Service.

Join via [Teams](#)

You can find the full drop-in session schedule
on our provider site here:

[drop-in sessions | Youth Service providers](#)

or print the [breakroom poster](#)



youth service
ratonga taiohi



**MINISTRY OF SOCIAL
DEVELOPMENT**
TE MANATŪ WHAKAHIATO ORA

realising the dreams and aspirations of youth

tau awhitia te taiohi, ka puta ki te wheiao

w: providers.youthservice.govt.nz

e: national_youthservice@msd.govt.nz