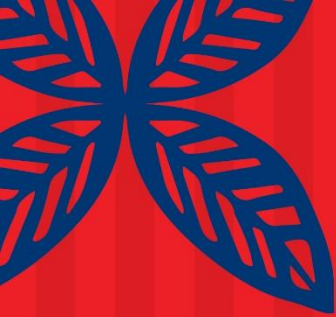


Ratonga Taiohi Pānui

what you need to know





03, 09
SEPT SEPT

Lea Faka-Tonga

Tonga Language Week 2023

Get ready to celebrate Tonga Language Week 2023!

Check out the resources on the Ministry for Pacific Peoples' [website](#)

Ngaahi Lea Faka-Tonga 'e 'aonga kiate koe

Useful / Everyday words

Tongan / Lea Faka-Tonga	English / Lea Faka-Pilitānia	Tongan / Lea Faka-Tonga	English / Lea Faka-Pilitānia
Mälō e lelei	Greetings / Hello	Fakamolemole	Sorry
Mälō e lelei	Greetings Everyone	Tulou or Kātaki fakamolemole	Excuse me
'Alu ā	Goodbye – to those who are leaving (only if it applies)	Ko hai ho hingoá?	What is your name?
Nofo ā	Goodbye – to those who are staying/Goodbye on the phone	Ko hoku hingoá ko _____	My name is _____
Fakamolemole/Kātaki	Please	'Okú ke ha'u mei fē? Ko ho'o ha'u mei fē?	Where are you from?
Mälō 'aupito	Thank you very much	Ko 'eku ha'u mei _____	I am from _____

! **top tip:** if you need interpreter services for taiohi who have English is a second language or who use New Zealand Sign Language (NZSL) give YSSU a call to access MSD's interpreter services



deep dive into Training Incentive Allowance

each Thursday we're diving into ways you can check taiohi payments are correct!

Only 12% of our taiohi are receiving Training Incentive Allowance (TIA)

Completing a FACE check means you've talked to the taiohi, asked questions, and have a full picture of their situation – and you are sure they are receiving everything they're entitled to.

Training Incentive Allowance [\(read more here\)](#)

- is a non-taxable payment for YPP (sole parents only) who meet the qualifications
- it helps them take up education or training so they can increase their employment skills and improve future employment outcomes

taiohi may qualify if

- they're receiving YPP and meet the residency requirements
- in a recognised course of study that'll last 12 weeks or longer and is
- Level 1 to 7 on the New Zealand Qualifications Framework (NZQF)

What you should do next

- Complete a FACE check to get a full picture of their situation, especially if things might have changed

Training Incentive Allowance (TIA) can help pay for things that will help taiohi study, like:

- tuition fees
- books
- childcare
- equipment
- transport, and
- any additional caring costs taiohi have while studying



National statistics	Has an obligation failure	Is on Money Management	Receiving Education incentive	Receiving Budgeting incentive	Receiving Parenting incentive	Receiving Accommodation Supplement	Receiving TAS	Receiving Disability Allowance	Receiving TIA
Full and Correct Entitlement	2%	63%	11%	47%	46%	56%	6%	1%	12%

Table 1. national rates of young people receiving payments, subjected to Money Management, or with an obligation failure



[Click here to read the FACE guide](#)

Completing a FACE check means you have talked to the taiohi, asked questions, and have a full picture of their situation



youth service
ratonga taiohi



MINISTRY OF SOCIAL
DEVELOPMENT
TE MANATŪ WHAKAHIATO ORA

upcoming drop-in sessions

our drop-ins focus on the technical aspects that are unique to our service

Fetal Alcohol Spectrum Disorder (FADS)

10am Tuesday 5 September



FASD is a very common neurodisability. It can result in complex physical, behavioural, learning and intellectual problems. An individual with FASD (and their parents) is often misjudged and criticised as non-compliant, uncooperative, resistant, manipulative and unmotivated. This workshop will be strongly based on lived experience. Both presenters have lived experience raising children with FASD and from long involvement in the FASD community.

Join via [Teams](#)

induction for new youth coaches

10am Wednesday 6 September



In this drop-in session we're cover:

- how legislation and policy determines how Youth Service operates
- the people and teams are that help deliver Youth Service
- where to find information to help you in your role

You'll also get to meet some other new youth coaches and be able to ask us any questions

Join via [Teams](#)

You can find the full drop-in session schedule
on our provider site here:

[drop-in sessions | Youth Service providers](#)

or print the [breakroom poster](#)



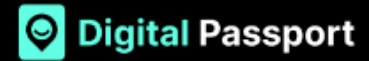
youth service
ratonga taiohi



MINISTRY OF SOCIAL
DEVELOPMENT
TE MANATŪ WHAKAHIATO ORA

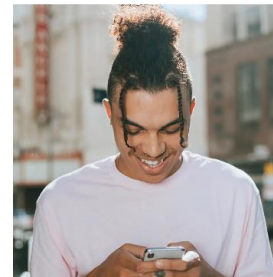
Digital Passport

Bite-sized modules to develop digital and soft skills



Digital Passport provides:

- **bite-size modules** make it easy to learn the essential digital skills needed in today's workplace
- learn in **20 minutes** a day
- earn completion badges
- taiohi can **learn online**, at their own pace, whenever they want. All they need is a device (computer, laptop or phone) with a stable internet connection.
- **It's fast, fun and free!**



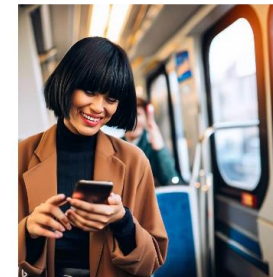
Digital Skills Level 1

Level 1 Free

This course gets you comfortable with the basics of computers and using the internet. You'll learn about how to stay safe online, social media platforms, image and video editing tools, virtual reality and more! Complete level 1 to unlock level 2.

📅 3.2 hrs ⌚ 20 mins per module

[Learn more](#)



Digital Skills Level 2

Level 2 Free

Discover the power of digital tools! From Google Docs to ChatGPT, learn to breeze through tasks effortlessly. Master email, upload videos to YouTube, organise with Trello, and learn how social media can be used for networking and job hunting.

📅 3.2 hrs ⌚ 20 mins per module

[Learn more](#)



Digital Skills Level 3

Level 3 Free

Take your digital skills to the next level. Dive deeper into the power of Google Suite (including Sheets and Slides) and get the hang of Zoom and Teams for video conferencing and online meetings. Level 3 is all about collaboration and connectivity!

📅 3.2 hrs ⌚ 20 mins per module

[Learn more](#)

Get started at www.digitalpassport.co.nz

text your taiohi - client experience survey!

for a chance for taiohi to win a \$50 Prezzy card!

We want as many responses as possible from taiohi – especially if your service is quite small – so we can see how we're tracking across the motu. The more young people respond the better our reporting!

Here's how you can help!

Text the link below or get them to scan the QR code. We'll enter everyone who completes the survey into a draw for a chance to win a \$50 Prezzy card!

<https://www.surveymonkey.com/r/YouthServiceNZ>



We want to know about their experience, whether it was good or bad, so that we can better support young people enrolled in Youth Service



Let Youth Service know what you think and go into the draw for a \$50 Prezzy card! Here's the survey link:

www.surveymonkey.com/r/YouthServiceNZ

Here's some text you might want to add to any messages you're sending to clients



youth service
ratonga taiohi



**MINISTRY OF SOCIAL
DEVELOPMENT**
TE MANATŪ WHAKAHIATO ORA

realising the dreams and aspirations of youth

tau awhitia te taiohi, ka puta ki te wheiao

w: providers.youthservice.govt.nz

e: national_youthservice@msd.govt.nz