

Ratonga Taiohi Pānui

what you need to
know



Matariki public holiday early deadline

Matariki public holiday is on Friday 14 July

early deadline – end of day Wednesday 12 July 2022

Please get tasks to YSSU for processing before the end of the short week

You must submit the following tasks early for it to take effect for the payment week beginning Monday 17 July:

- Redirections
- Income
- Bank Account change
- Start or Stop payments
- Child Changes
- Change of Relationship



Matariki comes into view low on the north-eastern horizon, in the tail of the Milky Way, just before dawn in midwinter. This heralds the Māori New Year and the changing of the seasons.

Learn more about Matariki [here](#)



youth service
ratonga taiohi



MINISTRY OF SOCIAL
DEVELOPMENT
TE MANATŪ WHAKAHIATO ORA

how we're tracking end of quarter data being pulled

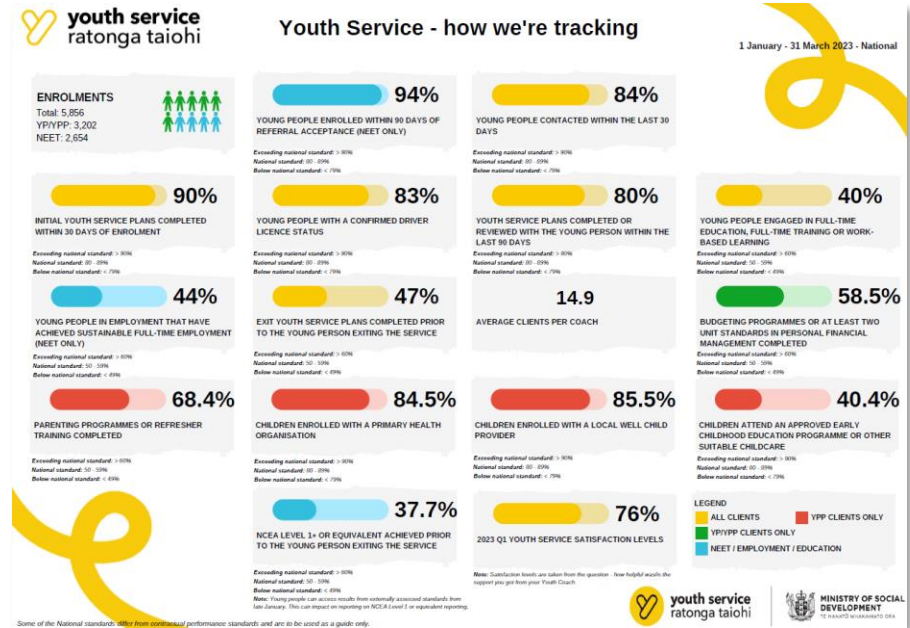
update your ART records by end of day Friday 30 June

Each quarter we pull data from ART to report on the achievements of taiohi in our service.

These reports help us to track progress and performance. We want them to be as accurate as possible.

Please ensure you've updated ART by the end of the day **Friday 30 June**

- Youth Service plans completed or reviewed
- any engagement with the taiohi
- if taiohi are working or studying full-time
- parenting and budgeting programmes completed
- if a young person has a driving licence or not
- any qualifications taiohi achieved
- for parents, if their child is enrolled with a PHO, well child and/or attending ECE
- exit plans



Civil Defence payments for Tairāwhiti / East Coast

Civil Defence payments have been activated for parts of Tairāwhiti / East Coast

These are available for taiohi and Youth Coaches who are affected by the Tairāwhiti / East Coast Weather Event in June 2023.

A Civil Defence Payment can help with:

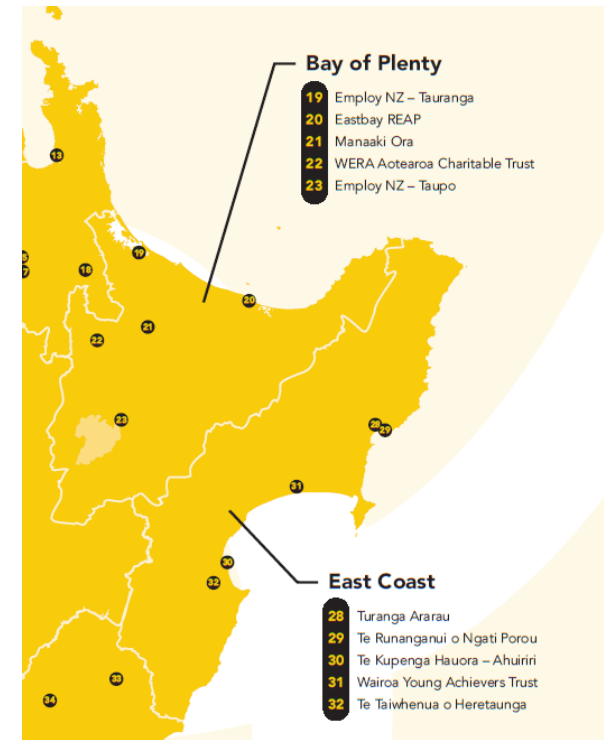
- emergency food, clothing and bedding if it has been damaged or destroyed by the event
- costs if they have to leave their home
- loss of income because they can't work due to the event
- a payment if they have evacuees staying with them in places such as a private home, marae or community centres.

For complete details regarding the Civil Defence payments process, please visit the [Youth Service provider website](#):

NOTE: Please email the CDP application to youthservice_response@msd.govt.nz

To be eligible to apply for a Civil Defence payment, taiohi must be residing in the following areas:

Wairoa	Gisborne	East Coast North of Gisborne
Mahia	Te Karaka	Tikitiki
Nuhaka	Ormond	Potaka
Morere	Matewai	Ruatoria
Ruakituri	Manutuke	Uawa
Te Reinga	Otoko	Tolaga Bay
Kotemoari	Muriwai	Tokomaru Bay
Raupunga	Ngatapa	Te Puia Springs
Mohaka	Makarori	Anaura Bay
Putorino	Whatatutu	Whangara
Tiniroto		Waipiro Bay
		Rangitukia
		Tauwhareparaē



youth service
ratonga taiohi



**MINISTRY OF SOCIAL
DEVELOPMENT**
TE MANATŪ WHAKAHIATO ORA

upcoming drop-in session - incentive payments

10am Tuesday 4 July – Join via [Teams](#)

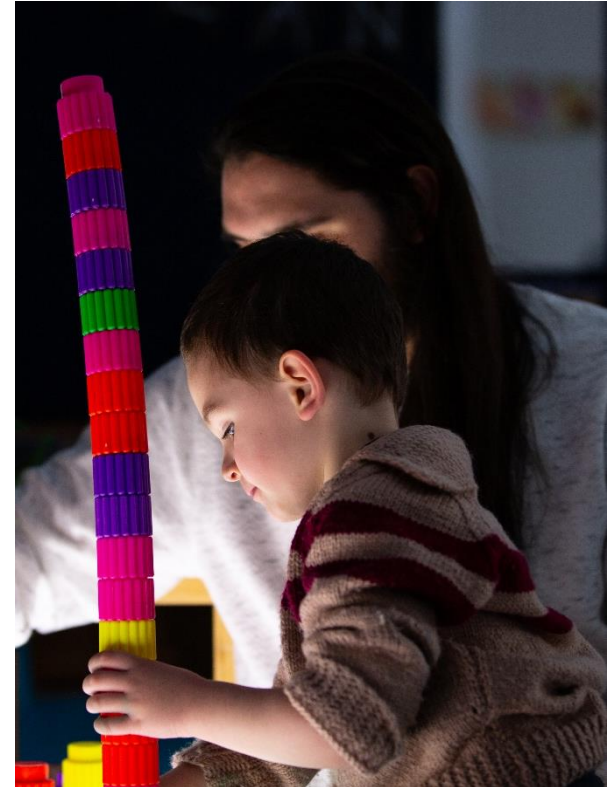
A young person may be eligible to receive incentive payments, providing they've met and continue to meet their activity obligations.

- Education Incentive Payment
- Budgeting Incentive Payment
- Parenting Education Incentive Payment

In this drop in session we'll cover:

- how to calculate the education incentive payment
- how to notify YSSU when a young person is eligible
- what to do if it's no longer appropriate for the young person to receive their incentive payment

Complete the [eLearning module](#) and bring your questions



You can find the full drop-in session schedule
on our provider site here:
[drop-in sessions | Youth Service providers](#)

Child Support Pass-on – extra drop-in session

10am Thursday 29 June – Join via [Teams](#)

Changes to how Child Support is collected by Inland Revenue and paid to sole parents might affect our taiohi from **1 July 2023**.

In this drop in we'll cover:

- what the changes are
- how these changes will affect taiohi paying or receiving Child Support Payments through Inland Revenue
 - applying for child support
 - treating child support as income and abatement rules
 - housing support and income-related rent
 - temporary additional support
- what Youth Coaches need to do to ensure their taiohi are receiving their full and correct entitlement, and aren't disadvantaged by the changes
- key dates and where to go for more information.

Bring all your child support questions



You can find the full drop-in session schedule
on our provider site here:
[drop-in sessions | Youth Service providers](#)

Pūanga ki Matariki - reflection & reset

free webinar from Community Research



Pūanga ki Matariki a time for reflection and reset



Join Tuihana Ohia (Ngāi te Rangi, Ngāti Pukenga, Te Arawa, Ngāi Pākehā) who will lead you on a guided journey into a calm space of wellbeing.

This free hauora session leads us into the phase of Matariki, a time to pause, to remember those that have passed, our lessons, learnings, how we may nurture our wellbeing and look to the time ahead.

We welcome NZSL users, Deaf and Hearing-impaired audiences

Tuesday 11 July 2023, 11am to 12pm

[Register here: Pūanga ki Matariki - Reflection & Reset | Humanitix](#)



youth service
ratonga taiohi



**MINISTRY OF SOCIAL
DEVELOPMENT**
TE MANATŪ WHAKAHIATO ORA

realising the dreams and aspirations of youth

tau awhitia te taiohi, ka puta ki te wheiao

w: providers.youthservice.govt.nz

e: national_youthservice@msd.govt.nz