

Ratonga Taiohi Pānui

what you need to know



deep dive into Accommodation Supplement

each Thursday we're diving into ways you can check taiohi payments are correct!

56% of our taiohi are receiving Accommodation Supplement

Accommodation supplement is weekly payment to help young people with their rent, board or the cost of owning a home

taiohi may be able to get Accommodation Supplement if...

- have accommodation costs
- are a New Zealand citizen or permanent resident
- normally live in New Zealand and intend to stay here
- meet an income and cash asset test
- and aren't paying rent for a social housing property

how much they might get depends on...

- their income and assets
- accommodation costs
- family circumstances
- and where they live



what you should do next

Full and correct entitlement (FACE) means that taiohi are receiving all the payments they are eligible for.

FACE means that taiohi are receiving all the payments they're eligible for

Complete a FACE check to get a full picture of their situation, especially if things might have changed.

Taiohi can also use the [Check what you might get](#) online tool as a guide for what payments they might be able to get.

National statistics	Has an obligation failure	Is on Money Management	Receiving Education incentive	Receiving Budgeting incentive	Receiving Parenting incentive	Receiving Accommodation Supplement	Receiving TAS	Receiving Disability Allowance	Receiving TIA
Full and Correct Entitlement	2%	63%	11%	47%	46%	56%	6%	1%	12%

Table 1. national rates of young people receiving payments, subjected to Money Management, or with an obligation failure



[Click here to read the FACE guide](#)

Completing a FACE check means you have talked to the taiohi, asked questions, and have a full picture of their situation



youth service
ratonga taiohi



MINISTRY OF SOCIAL
DEVELOPMENT
TE MANATŪ WHAKAHIATO ORA

support while waiting for benefit decision

taiohi may need financial assistance during the application process for YP and YPP

We call this **Waiting for Benefit Decision** or **Benefit Due Payment**

Payments to help young people who need financial support while awaiting the outcome of their application

Young people must first apply for Youth Payment or Young Parent Payment before they can get assistance during the application process.

You should always check if a young person needs this assistance while waiting for their benefit decision.

Young people will have to pay this money back.

- If they've received their maximum entitlement during the stand-down, they may be able to get other assistance, eg food grants.
- To get other assistance, they or a family member must be experiencing an emergency or be in extreme hardship.
- They'll still need to qualify for any hardship assistance they apply for.

Find out more about [Special Needs Grants and hardship assistance and eligibility](#)

Make sure you provide supporting documents required for the hardship application

! NOTE: you must have met the young person face-to-face at least once

Next steps

YSSU may contact you or push the task back to you if we need more information

YSSU will send you a notification via ART regarding the outcome of the application



youth service
ratonga taiohi



**MINISTRY OF SOCIAL
DEVELOPMENT**
TE MANATŪ WHAKAHIATO ORA

child support pass-on: info share update

successful first child support info share with IR

what's changed

From 1 July 2023, formula-assessed child support paid via Inland Revenue (IR) is passed on, in full, to sole parent beneficiaries by IR

- child support is being passed on to these taiohi the same way it is already paid to other MSD clients e.g. re-partnered couples on a main benefit
- sole parents receiving YPP are no longer be required to apply for child support from IR
- we're treating child support payments a person receives as income

From 22 August 2023, MSD has started receiving information about specific types of child support through an information share with IR (we call this "info share child support").

- info share child support is automatically charged forward as income, for four or five weeks
- clients will no longer need to self-declare info share child support

the first child support info share with Inland Revenue (IR) successfully took place on Tuesday

For the taiohi who get info share child support via IR, this has automatically been charged forward as income against their benefit and other income tested payments.

- Our taiohi received info-share MyMSD letters yesterday, and they'll get physical letters later this week.



want to know more?

complete the [child support pass-on eLearning module](#)



youth service
ratonga taiohi



MINISTRY OF SOCIAL
DEVELOPMENT
TE MANATŪ WHAKAHIATO ORA

upcoming drop-in sessions

our drop-ins focus on the technical aspects that are unique to our service

Youth coach wellbeing series

10am Tuesday 29 August

Selfcare and working in partnership



Kate Groundwater is one of MSD's Workplace Wellbeing Senior Advisors. Her interest in mental health and wellbeing has seen her complete a BSc with a major in Psychology. This session will cover selfcare and working in partnership, psychological safety and how it can affect team dynamics.

Join via [Teams](#)

emergency housing improvements

9:30am Wednesday 30 August



In this drop in we're going to cover the new measures in place to strengthen the emergency housing system:

1. Supplier standards for EH suppliers
2. Guide for people in emergency housing
3. Resolution framework
4. Updated operational guidance

Join via [Teams](#)

You can find the full drop-in session schedule
on our provider site here:

[drop-in sessions | Youth Service providers](#)

or print the [breakroom poster](#)



youth service
ratonga taiohi



MINISTRY OF SOCIAL
DEVELOPMENT
TE MANATŪ WHAKAHIATO ORA

MSD system upgrades this Sunday

Sunday 27 August – MyMSD and MyStudyLink and Apply Online

MyMSD

On Sunday 27 August, from 6am – 4pm, we're upgrading our systems, which will impact MyMSD

- There may be times when clients can't log in.
- When they can log in, they'll be able to declare wages and check payments, but won't be able to see their payment card balance, or update their details.

MyStudyLink and Apply Online

On Sunday 27 August, from 7am – 12pm, MyStudyLink and Apply Online will be undergoing planned maintenance.

- Clients will still be able to see their information, but they won't be able to apply, update their details or make changes.



youth service
ratonga taiohi

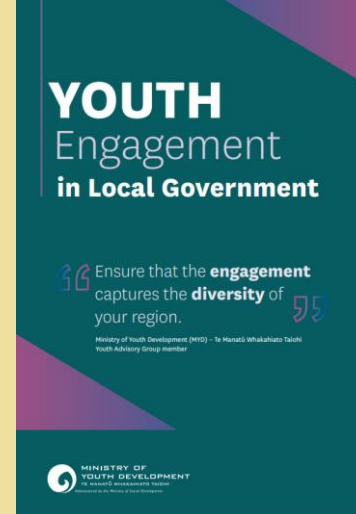
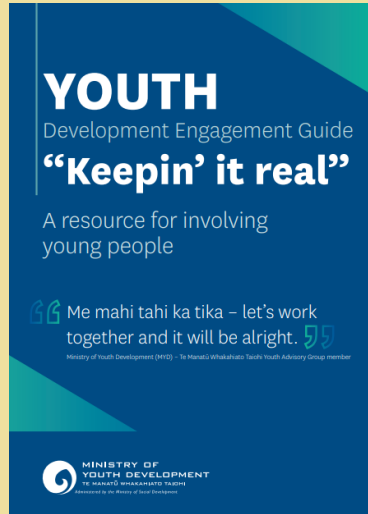
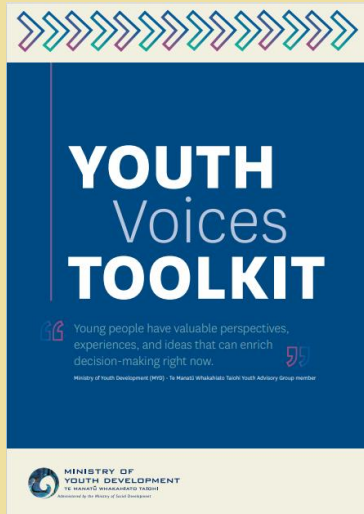


**MINISTRY OF SOCIAL
DEVELOPMENT**
TE MANATŪ WHAKAHIATO ORA

updated youth engagement resources

the Ministry of Youth Development (MYD) – Te Manatū Whakahiato Taiohi has update its Youth Engagement Resources

Click the images below to download the PDFs



realising the dreams and aspirations of youth

tau awhitia te taiohi, ka puta ki te wheiao

w: providers.youthservice.govt.nz

e: national_youthservice@msd.govt.nz