

ratonga taiohi pānui

what you need to know



is your art admin up to date?

if it's not in art, it did not happen!

If your admin in ART is not up to date, now is the time to change that. We need accurate data in ART so that we can **prove**:

- Where we need additional resources, for example mental health supports
- Youth Service is effective and helps young people to [reach positive outcomes](#).

So please, make sure that young people's ART profiles are up to date. Check:

- all notes are attached to the relevant Need/Activity
- the Administration and Milestone checklist is all green (if not, why not?)
- NCEA, Driver Licence, and Well-Child statuses are accurate.

Tips and tricks



Admin users can request FACE, Needs and Activities reports by emailing national_youthservice@govt.nz



youth service
ratonga taiohi



MINISTRY OF SOCIAL
DEVELOPMENT
TE MANATŪ WHAKAHIATO ORA

more help with childcare costs for young parents

guaranteed childcare assistance payment and flexible childcare assistance are improving



Flexible Childcare Assistance (FCA)

FCA helps with the cost of informal childcare for parents who have education, training or work-based learning at times when they can't access childcare programmes.

What's changing?

From 1 April, FCE eligibility will be expanded to include support for young people!

Read more about FCA and find out how you can apply here: [flexible childcare assistance | Youth Service providers](#)

Guaranteed Childcare Assistance Payment (GCAP)

From 1 April the rate for GCAP will be increasing, to match the highest rates of childcare payments available for working age clients. The GCAP rate will now increase annually to in line with the Consumers Price Index (CPI).

Find out more about GCAP here: [guaranteed childcare assistance payment \(gcap\) | Youth Service providers](#)

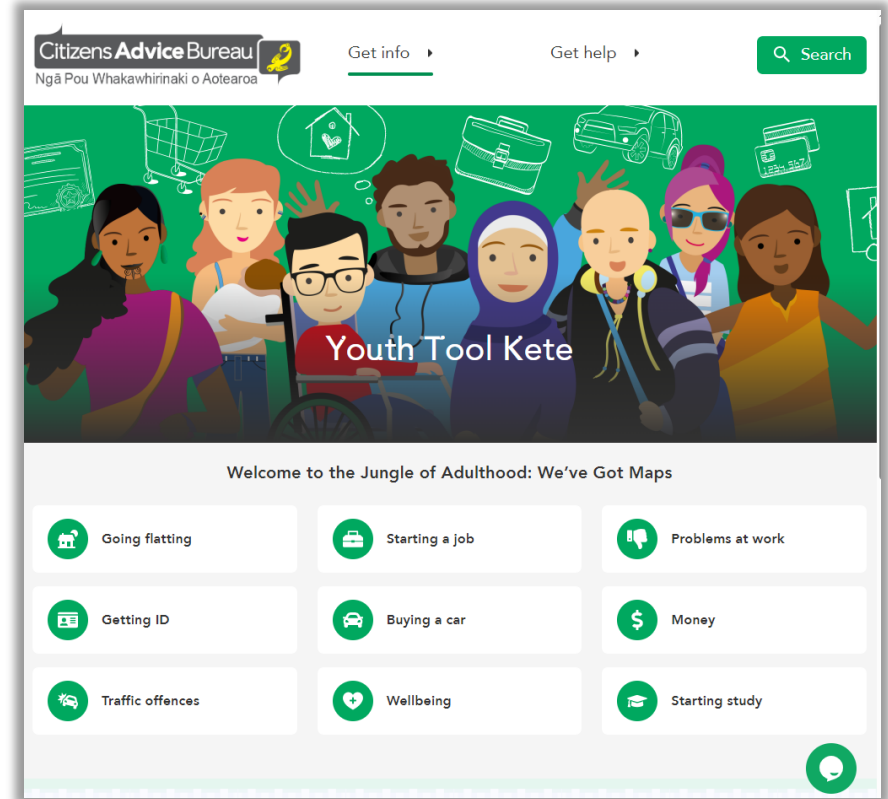
citizens advice bureau tool kete for taiohi

this resource is filled with advice to help young people navigate tricky stuff

The Citizens Advice Bureau has launched a [Youth Tool Kete](#) that has advice specifically designed for people under 25.

The kete was developed based on the findings from their [Youth Engagement with Citizen Advice Bureau report](#) which looked at the most common issues young people were seeking advice on.

The Youth Tool Kete is written with young people in mind and explains things clearly. In it, you'll find lots of helpful advice on things like domestic violence, employee rights, flatting and buying a car.



upcoming drop-in sessions

drop-in to meet other youth coaches and learn about youth service

induction for new coaches
Wednesday 3 April, 10am



In this drop-in session we're cover:

- the legislation and policy that determines how Youth Service operates
- the people and teams that help deliver Youth Service
- an overview of the Activity Reporting Tool (ART)
- where to find information to help you in your role.

Join via [Teams](#)

spotlight on employment support
Tuesday 9 March, 10am



[Industry Partnerships](#) will be coming to talk about the mahi they do, and how they can support taiohi find employment.

See what they talked about last time here:

[PowerPoint Presentation \(youthservice.govt.nz\)](#)

Join via [Teams](#)

You can find the full drop-in session schedule on our provider site
[drop-in sessions | Youth Service providers](#)
or print the [breakroom poster](#)



youth service
ratonga taiohi



**MINISTRY OF SOCIAL
DEVELOPMENT**
TE MANATŪ WHAKAHIATO ORA

realising the dreams and aspirations of youth

tau awhitia te taiohi, ka puta ki te wheiao

w: providers.youthservice.govt.nz

e: national_youthservice@msd.govt.nz