



youth service
ratonga taiohi

ratonga taiohi pānui

what you need to know

Rāpare 30 Paengawhāwhā 2026
Thursday 30 April 2026



**MINISTRY OF SOCIAL
DEVELOPMENT**
TE MANATŪ WHAKAHIATO ORA



4^{TO} 10 MAY
2026

20 years

winter energy payment starts on friday

the winter energy payments runs from 1 may to 1 october



The Winter Energy Payment is an extra payment to help with the cost of heating in a young person's home over the winter months.

Young people receiving Youth Payment or Young Parent Payment don't need to apply, they'll get the Winter Energy Payment automatically along with their other regular payments from us.

Payment rates for Winter Energy Payment:

- \$20.46 for singles
- \$31.82 for couples (and single young parents)

Because benefits are paid in arrears and 1 May is a Friday, taiohi will receive a part payment in the week of 4 May and full payment from 11 May.

Find out more here:

[Winter Energy Payment | Work and Income](#)



youth service
ratonga taiohi



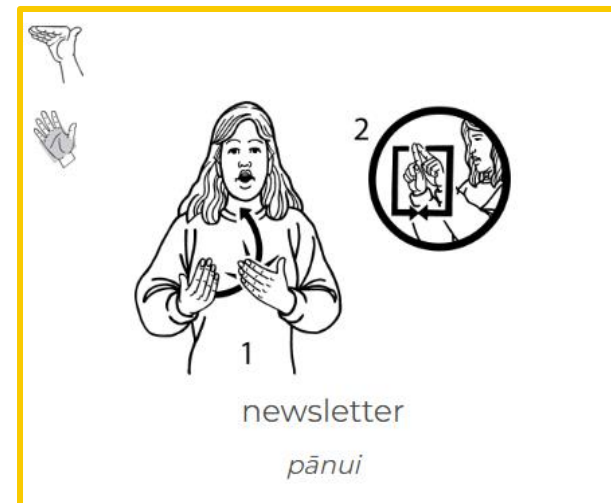
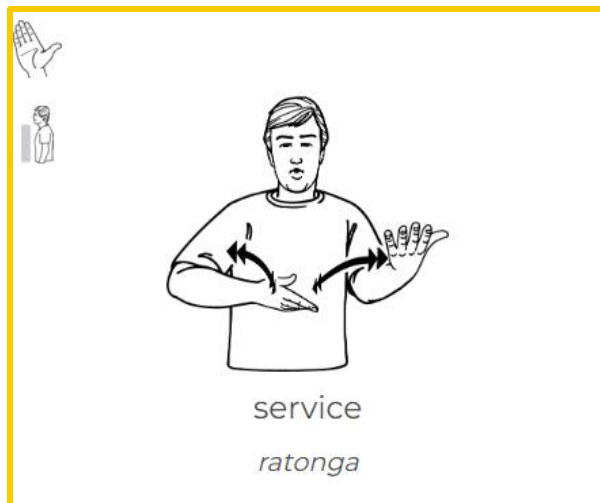
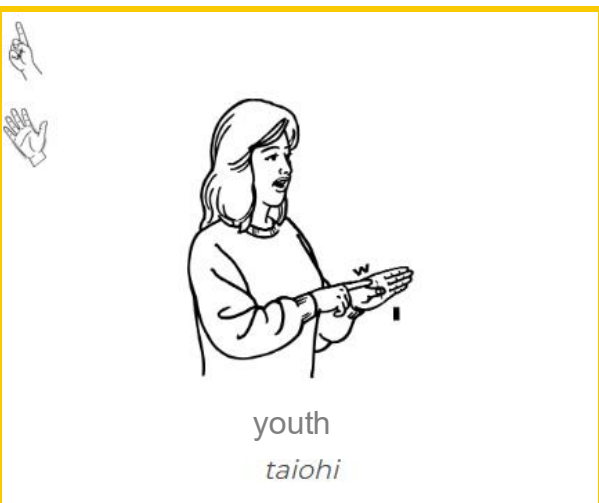
MINISTRY OF SOCIAL
DEVELOPMENT
TE MANATŪ WHAKAHIATO ORA

new zealand sign language week incoming

new zealand sign language week runs from 4-10 may

This year celebrates two decades of New Zealand Sign Language being recognised, shared, and championed across Aotearoa.

Below is how to sign Youth Service update in NZSL, give it a go!



Learn more about NZSL here:

[New Zealand Sign Language – For an Aotearoa Where Anyone Can Sign Anywhere](#)



youth service
ratonga taiohi



MINISTRY OF SOCIAL
DEVELOPMENT
TE MANATŪ WHAKAHIATO ORA

drop-in recap: obligations and sanctions

missed the drop-in last week? catch the key points here

Youth Activity Obligations are the things that young people agree to do when they apply for Youth Payment or Young Parent Payment. [meeting youth activity obligations | Youth Service providers](#)

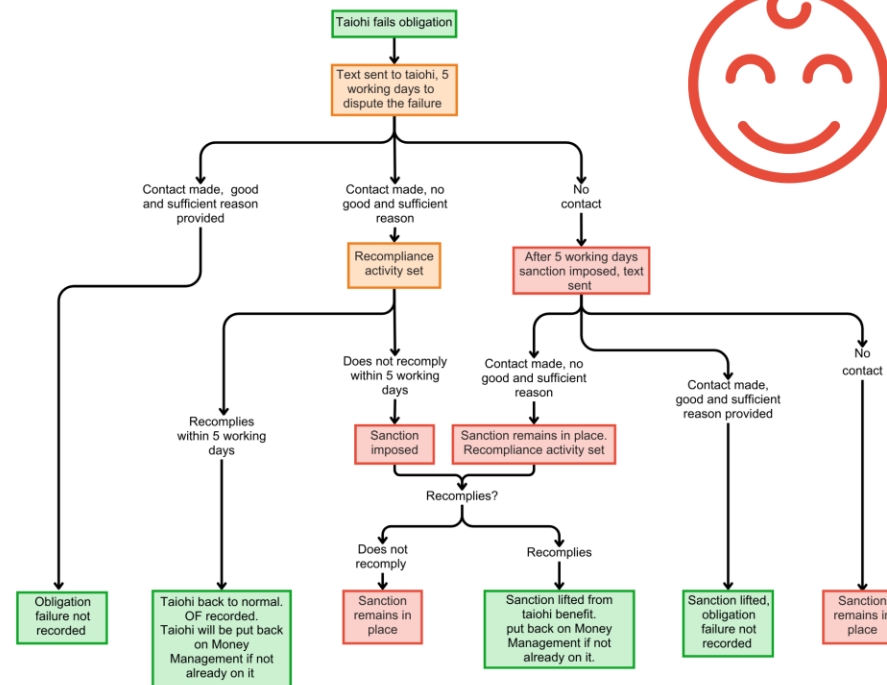
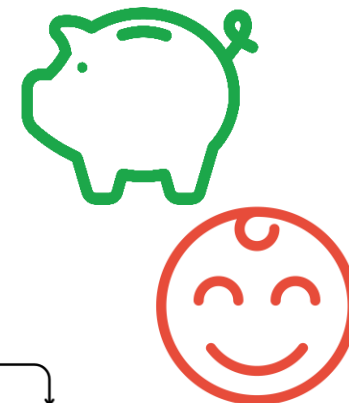
When taiohi meet their budgeting, parenting and education obligations consistently they can earn **incentive payments**.

[incentive payments | Youth Service providers](#)

They can get a **full or partial exemption** from their obligations if they can't do them for a period of time. [exemptions | Youth Service providers](#)

If a young person doesn't do what they've agreed to do, you might **recommend an obligation failure**. You can see how that process goes in the diagram. The sanctions depend on what grade of obligation failure they are at, and their circumstances.

[youth activity obligation failures | Youth Service providers](#)



youth service
ratonga taiohi



**MINISTRY OF SOCIAL
DEVELOPMENT**
TE MANATŪ WHAKAHIATO ORA

upcoming drop-in sessions

drop-in to meet other youth coaches and learn about youth service

service performance Tuesday 5 May, 10am

Service performance standards are checks we use to make sure young people are getting the right level of support.

In this session, we will go over:

- how those standards work
- what they look like in action
- how to add information in ART.

[Join the Teams meeting](#)

induction for new coaches Wednesday 6 May, 10am

In this drop-in session we'll cover:

- how legislation and policy determines how Youth Service operates
- the people and teams that help deliver Youth Service
- where to find information to help you in your role.

[Join the Teams meeting](#)

programme fund Tuesday 12 May, 10am

Programme Fund can be used to help taiohi pay for things that will improve their employability, education or wellbeing.

It's for things that will help them reach their goals in their Youth Service plan that can't be accessed through other payments, like hardships.

[Join the Teams meeting](#)

full drop-in schedule

[Drop-in sessions | Youth Service providers](#)



youth service
ratonga taiohi



**MINISTRY OF SOCIAL
DEVELOPMENT**
TE MANATŪ WHAKAHIATO ORA

realising the dreams and aspirations of youth

tau awhitia te taiohi, ka puta ki te wheiao

providers.youthservice.govt.nz

national_youthservice@msd.govt.nz